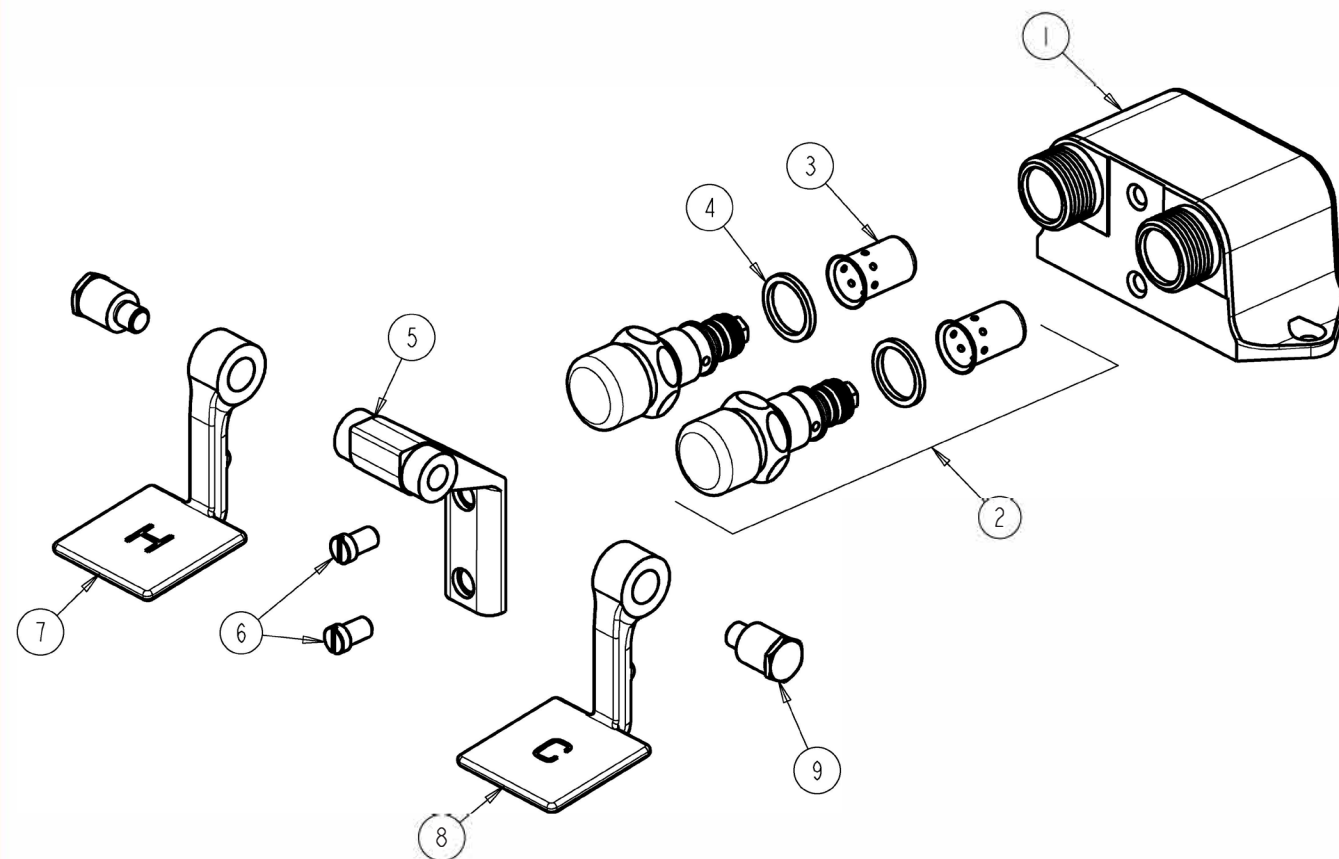


**REPAIR
PARTS**

BY: JAR DATE: 10-30-08
CHK: REV: 06-20-11

FITTING NO.
625-ABCP
SUBMITTED MODEL NO.

ITEM NO.



ITEM	PART NO.	DESCRIPTION
1	—	VALVE BODY (NOT SOLD SEPARATELY)
2	99163307	CARTRIDGE, PUSH BUTTON
3	21117	DASHPOT
4	21108	GASKET, CAP 1 X .80 X .09
5	99033708	BRACKET
6	99049385	SCREW, PAN HEAD 5/16-18 UNC
7	99282274	PEDAL, HOT
8	99282273	PEDAL, COLD
9	99285805	BOLT, SHOULDER 3/8-24 UNF X 5/8 HEX



Our Goal is Simple — Help Our Customers!

*We're Here For You
When You Need Us.*

Visit Us Online

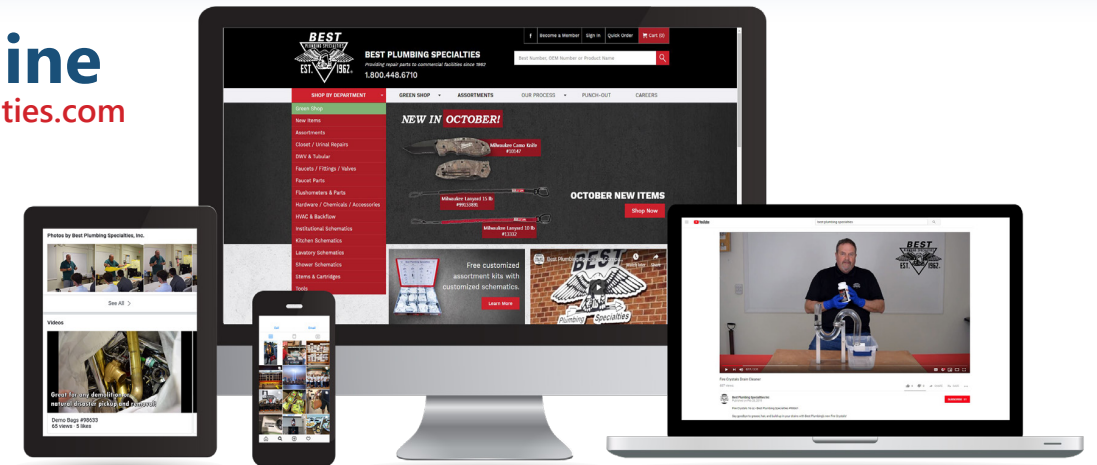
www.bestplumbingspecialties.com

- Browse
- Shop
- Watch New Items Videos
- and more!

Not registered?

Sign up online or email
Marketing at:

marketing@bestplumbingonline.com



To learn more about our **new items every month**, connect with us on social media



Facebook.com/bestplumbingspecialties



youtube.com/user/bestplumbingonline



[bestplumbingspecialties](https://bestplumbingspecialties.com)

Need help identifying a part, or finding compatible solutions?



Call **1-800-448-6710** or email info@bestplumbingonline.com
(7 a.m. – 6 p.m EST) Monday- Thursday (7 a.m. – 5 p.m. EST) Fridays

Looking to place an order?



Shop Online, Contact Your Rep or Email: orders@bestplumbingonline.com

Subscribe to our email newsletter!

Every month we update you on our new and featured items for the month as well as updates on ongoing and future promotions!

Scan here to
sign up for our
newsletter



Your Account Rep is

**DID YOU
KNOW WE
CARRY?**



Scan here
for our latest
Promotion!

